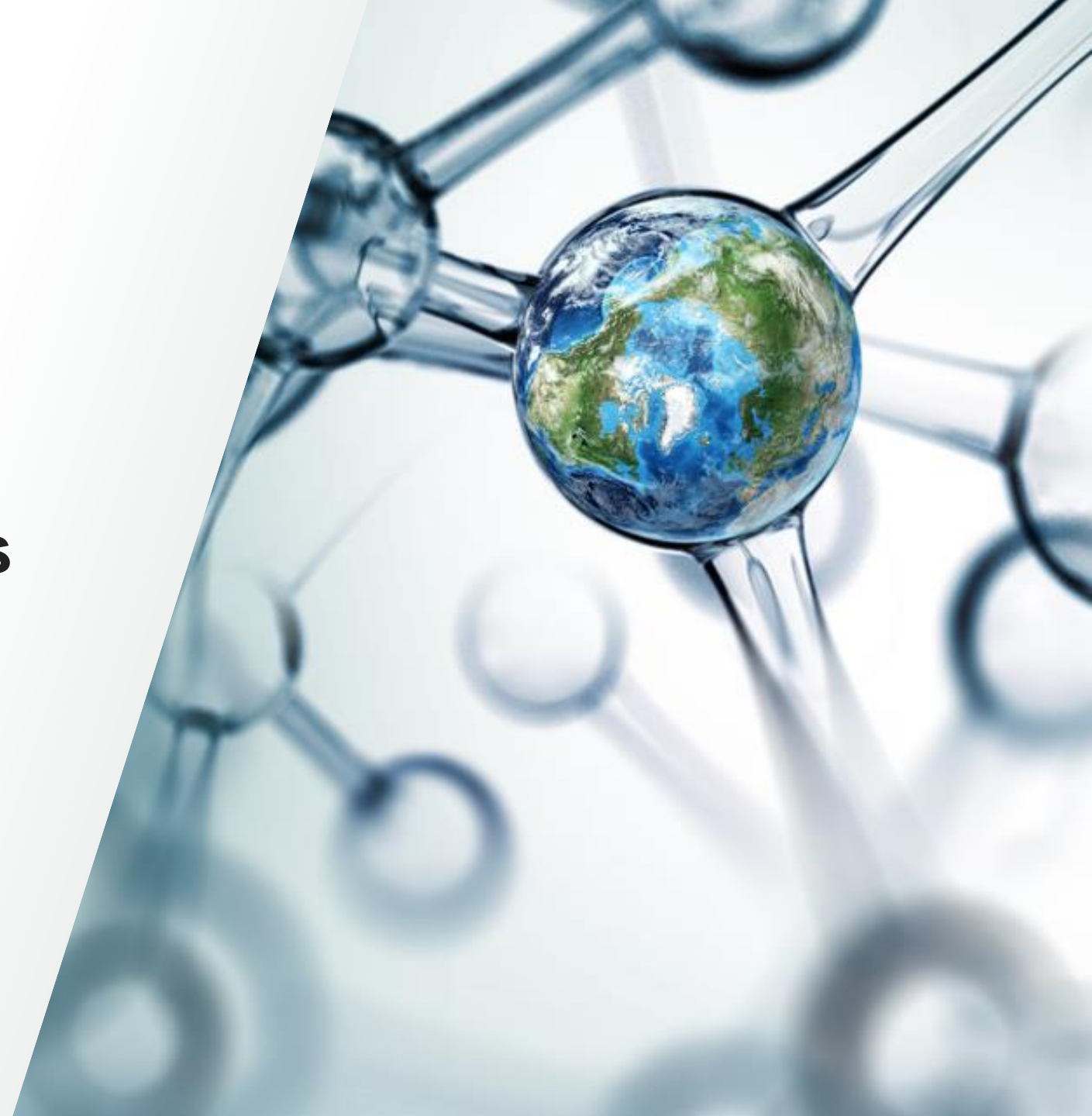


# Innovation in Clinical Trials

Director, Product Management  
Philipp Abegg

 The world leader in serving science



# Agenda

1 Clinical Trial Innovation: Digital Integration

2 Clinical Trial Innovation: Patient Centricity

3 Clinical Trial Innovation: Innovating for  
Process Optimization

4 Conclusion





# Clinical Trial Innovations

De-risking through Digital Integration

# Real-time Track & Trace

Simplifying and improving the experience for our customers



Integrated digital and physical supply chain:

**15** sensor  
providers

**46** transportation  
carriers

**500,000** shipments

**One** platform

Centralizing your shipment data to provide the ultimate oversight and insight:



Device-  
agnostic



Carrier-  
agnostic



Secure GxP  
compliant



Data privacy  
compliant



# Medication adherence challenges in clinical trials and associated risks<sup>1</sup>

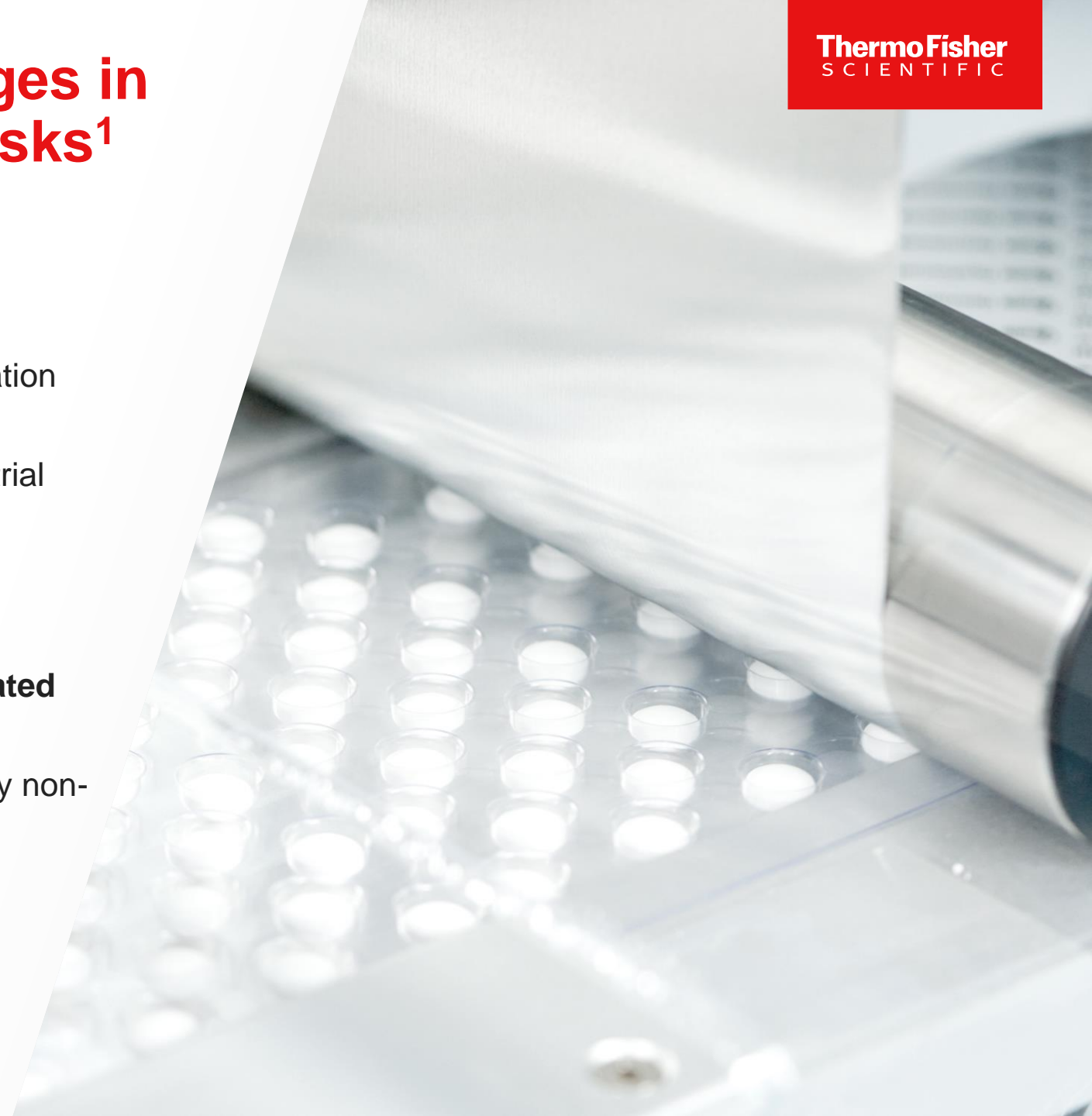
- **Non-adherence**

- **Non-starters** – 4% do not initiate a study drug
- Each study day, **10–12%** does not take their medication while still on treatment
- In long-term studies, after one year, almost 40% of trial participants have stopped taking their medication

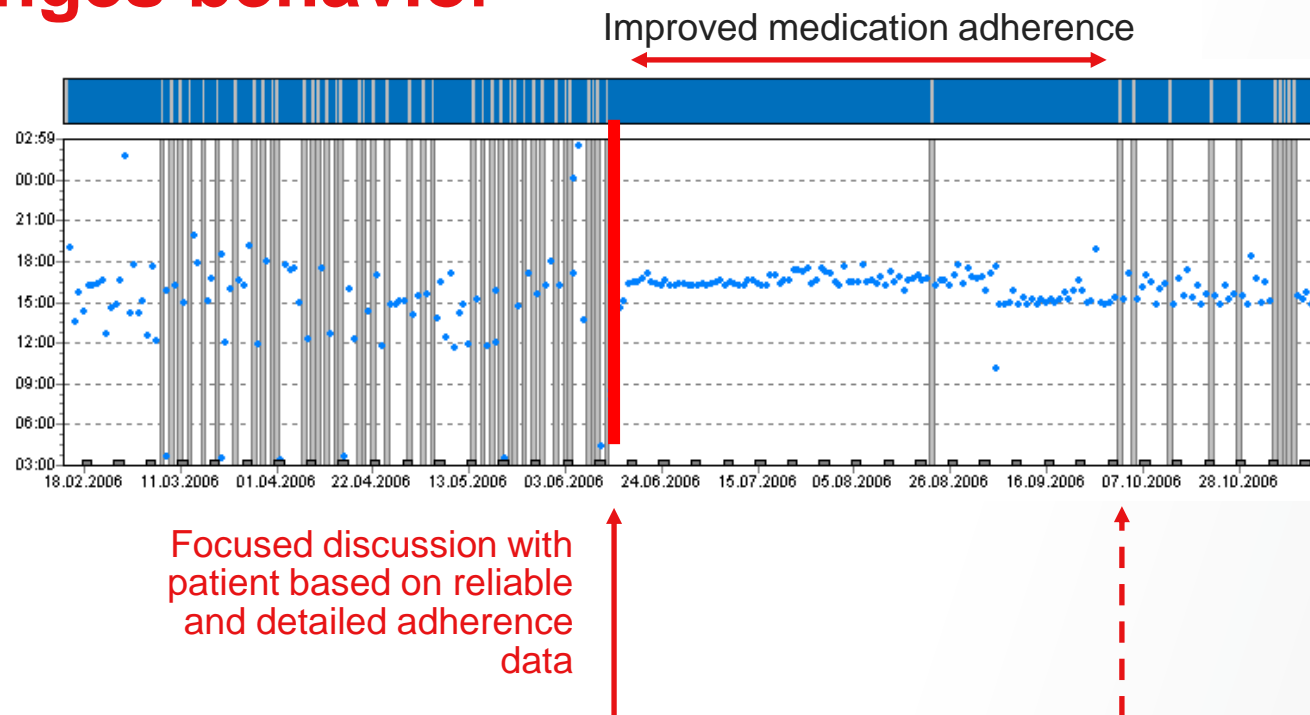
- **Risks**

- “Ignoring non-adherence could lead to **underestimated drug efficacy and safety**”
- **Loss of statistical power** of clinical trials caused by non-adherence.

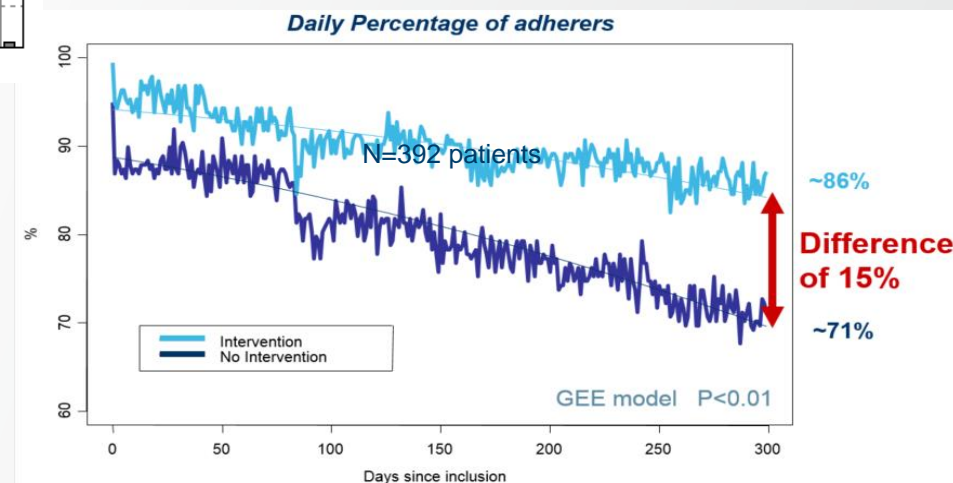
1] Smart Medication Adherence Monitoring in Clinical Drug Trials: A Prerequisite for Personalised Medicine? Published online 2019 Aug 27. <https://www.ncbi.nlm.nih.gov/pmc/articles/PMC6833361/>



# Patients' awareness of their adherence patterns changes behavior



Example of a successful intervention



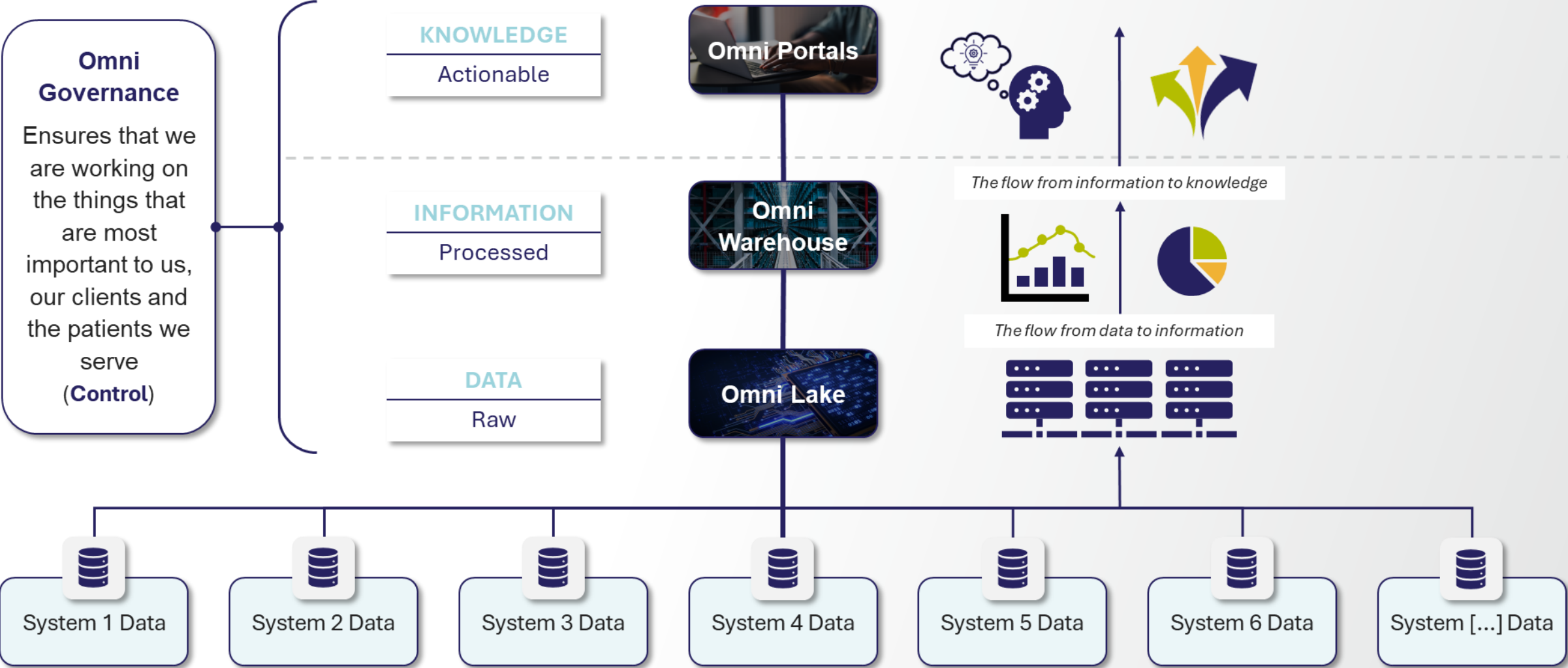
**Showing patients their own dosing history is the most effective means to improve adherence**

[Vrijens B, et. al. Effect of intervention through a pharmaceutical care program on patient adherence with prescribed once-daily atorvastatin. Pharmacoepidemiol Drug Saf. 2006 Feb;15\(2\):115-21.](#)

[Demonceau J, et. al. Identification and assessment of adherence-enhancing interventions in studies assessing medication adherence through electronically compiled drug dosing histories: a systematic literature review and meta-analysis. Drugs. 2013 May;73\(6\):545-62.](#)

# What is Omni Everywhere?

This is a single program that is *bringing together all of our data-related activities* into a centralized location / function to *enhance our overall data quality and governance*.





# Clinical Trial Innovations

Patient Centricity



# Why patient centricity?

## Focus on patient centricity



Only 15% of trials complete on time and as delays cost money this means just 10% of the trials are accomplished on budget.



Patient centricity is key to achieving higher levels of **success**.



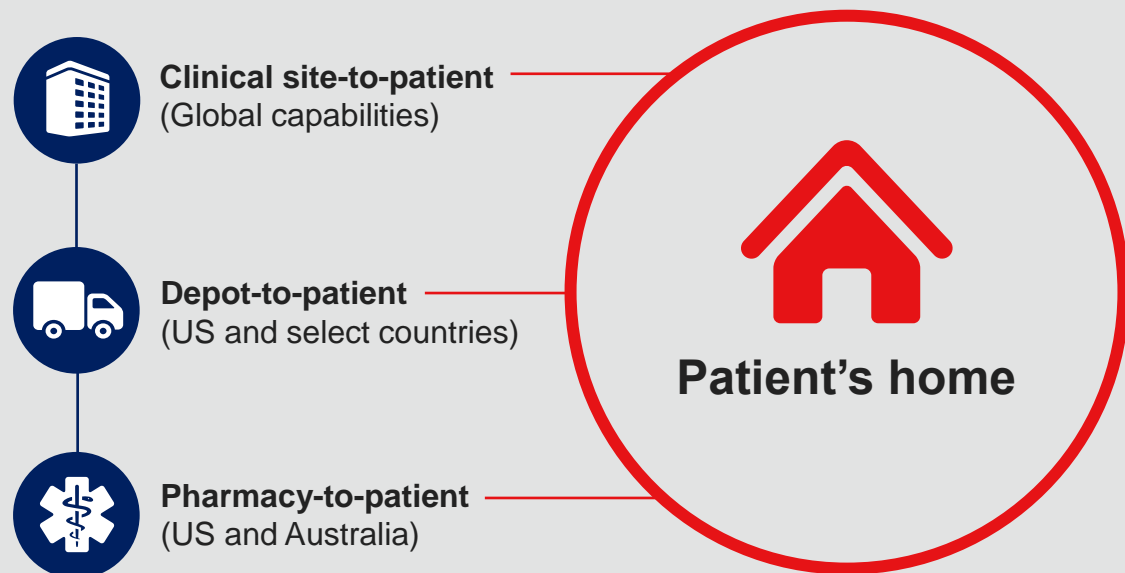
Focusing on the patient and how to make the trial easier and more tailored to their needs can significantly improve **patient adherence, outcomes, recruitment and retention**.



Whilst embracing digital transformation, patient engagement must be made a priority with the investment of holistic patient support services throughout the clinical trial

# Direct-to-patient services for decentralized trials\*

Streamline your supply chain by combining direct-to-patient and traditional clinical trial services



51+ countries approved by regulatory experts (where permitted by country regulations)

Ability to scale by using a global network of approved suppliers

Total Transportation Management leverages the best performing courier

Capabilities to support traditional trials, hybrid trials or 100% virtual trials





# Clinical Trial Innovations

Innovating for Process Optimization





# Tamper evident carton | Improved quality and sustainability



Combines protective carton packaging and tamper-evident sealing

## Overview

Our customers are looking for ways to prevent tamper seals from lifting. Leveraging our expertise in packaging design and practical process improvement tools, we've developed a unique carton design tailored to meet market demands.



**Patent granted:**  
March 2024



**Re-seal panel**  
for expiry updates



**Specially-designed carton,**  
adaptable to fit most vial sizes



**Offered across our**  
packaging network



## Suitability

Suitable for vial sizes 2R up to 20R with single or booklet labels

- ✓ Eliminates the risk of tamper seals lifting
- ✓ Environmental benefit—no foam, no glue
- ✓ 1x vial kit carton for ambient down to -80°C

# 2024 investments in capacity and innovation

Focus areas  
for ongoing  
service and  
capacity  
expansion



~4,800

Colleagues currently invested  
in serving our customers



1 site

Netherlands C&GT facility  
opening Q2 '24



~\$70M

2024 overall capital  
investment



>\$18M

2024 Investment in Clinical  
Labels capacity



~\$20M

2024 Technology and  
Innovation investment



>\$320M

Total investment in Clinical  
Supplies '20 -'24

# Conclusion

- ✓ Rapidly evolving digital landscape
- ✓ Prioritize patient centricity and engagement
- ✓ Innovating for process optimization

**Embracing innovation, focusing on patient centricity, and process optimization will pave the way to success**



# Thank you

We supply the hope that changes lives!

